

**ZDHHC11 Antibody (C-term)**  
**Purified Rabbit Polyclonal Antibody (Pab)**  
**Catalog # AP20746c**

**Specification**

---

**ZDHHC11 Antibody (C-term) - Product Information**

Application	WB,E
Primary Accession	<a href="#">Q9H8X9</a>
Reactivity	Human
Host	Rabbit
Clonality	Polyclonal
Isotype	Rabbit IgG

**ZDHHC11 Antibody (C-term) - Additional Information**

**Gene ID** 79844

**Other Names**

Probable palmitoyltransferase ZDHHC11, Zinc finger DHHC domain-containing protein 11, DHHC-11, Zinc finger protein 399, ZDHHC11, ZNF399

**Target/Specificity**

This ZDHHC11 antibody is generated from a rabbit immunized with a KLH conjugated synthetic peptide between 333-368 amino acids from the C-terminal region of human ZDHHC11.

**Dilution**

WB~~1:1000

E~~Use at an assay dependent concentration.

**Format**

Purified polyclonal antibody supplied in PBS with 0.09% (W/V) sodium azide. This antibody is purified through a protein A column, followed by peptide affinity purification.

**Storage**

Maintain refrigerated at 2-8°C for up to 2 weeks. For long term storage store at -20°C in small aliquots to prevent freeze-thaw cycles.

**Precautions**

ZDHHC11 Antibody (C-term) is for research use only and not for use in diagnostic or therapeutic procedures.

**ZDHHC11 Antibody (C-term) - Protein Information**

**Name** ZDHHC11 ([HGNC:19158](#))

**Function** Endoplasmic reticulum-localized palmitoyltransferase that could catalyze the addition of palmitate onto various protein substrates and be involved in a variety of cellular processes (By similarity). Has a palmitoyltransferase activity toward NCDN and regulates NCDN association with

endosome membranes through this palmitoylation (By similarity). May play a role in cell proliferation (PubMed:[28331227](#)).

**Cellular Location**

Endoplasmic reticulum membrane; Multi-pass membrane protein

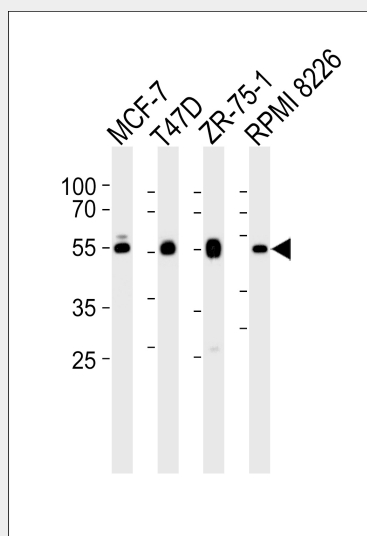
**Tissue Location**

Expressed in testis..

**ZDHHC11 Antibody (C-term) - Protocols**

Provided below are standard protocols that you may find useful for product applications.

- [Western Blot](#)
- [Blocking Peptides](#)
- [Dot Blot](#)
- [Immunohistochemistry](#)
- [Immunofluorescence](#)
- [Immunoprecipitation](#)
- [Flow Cytometry](#)
- [Cell Culture](#)

**ZDHHC11 Antibody (C-term) - Images**

Western blot analysis of lysates from MCF-7, T47D, ZR-75-1, RPMI 8226 cell line (from left to right), using ZDHHC11 Antibody (C-term) (Cat. #AP20746c). AP20746c was diluted at 1:1000 at each lane. A goat anti-rabbit IgG H&L (HRP) at 1:5000 dilution was used as the secondary antibody. Lysates at 35ug per lane.

**ZDHHC11 Antibody (C-term) - References**

Ota T., et al. Nat. Genet. 36:40-45(2004).